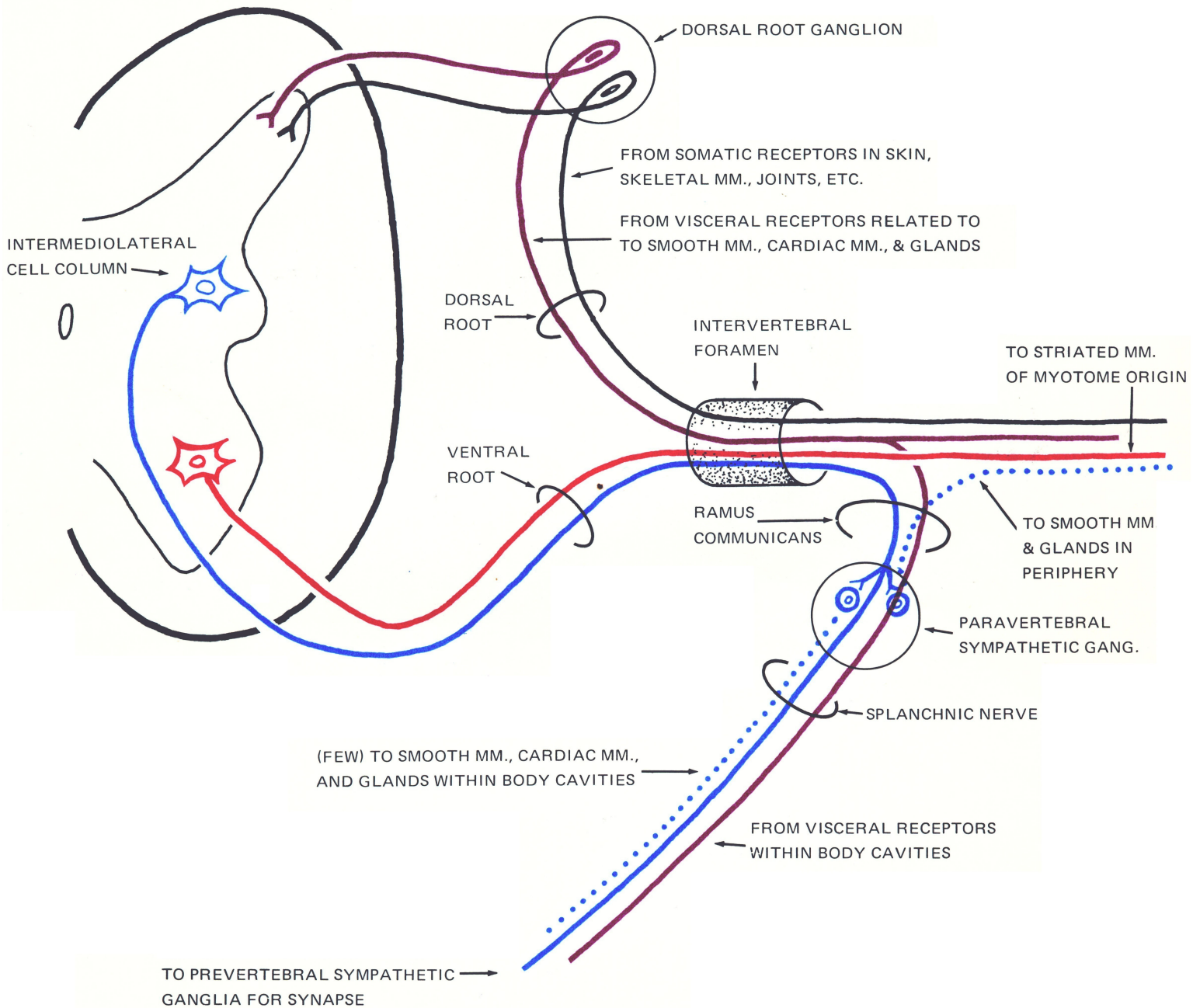


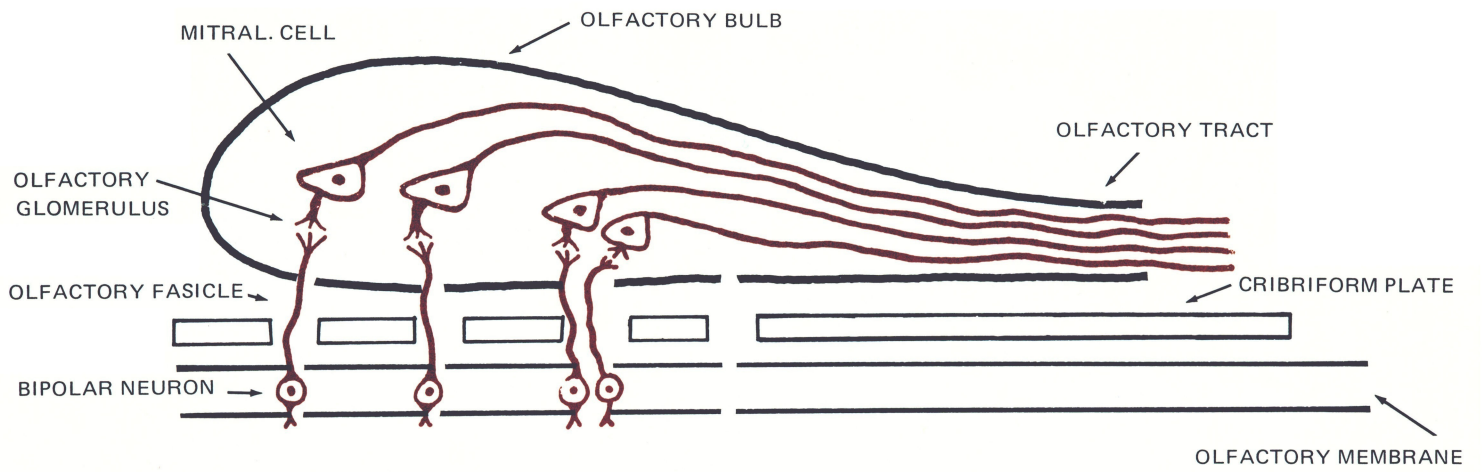
"TYPICAL" SPINAL NERVE (i.e. T₁L₂) *

GSA GVE GSE GVA

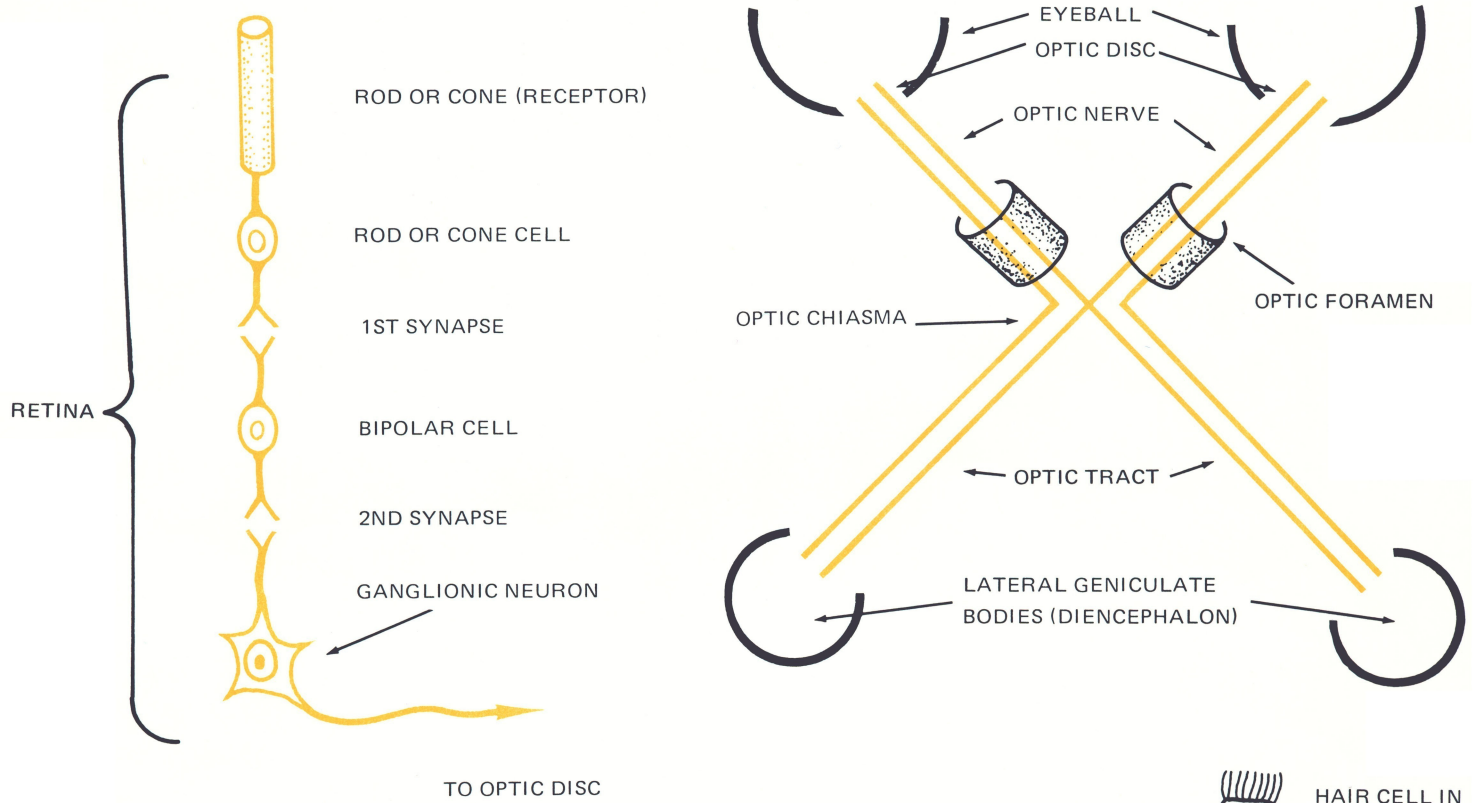


* ABOVE AND BELOW THESE LEVELS, PREGANGLIONIC GVE SYMPATHETIC CONTRIBUTION (SOLID BLUE) IS ABSENT; POSTGANGLIONIC SYMPATHETIC FIBERS (DOTTED BLUE) ENTER SEGMENTAL NERVES FROM SYMPATHETIC GANGLIA (VIA COMMUNICATING RAMI) AT ALL LEVELS. ONLY A FEW POSTGANGLIONIC FIBERS ARE TO BE FOUND IN ANY SPLANCHNIC NERVE; PREGANGLIONIC FIBERS ARE THE MAJOR EFFERENT COMPONENT.

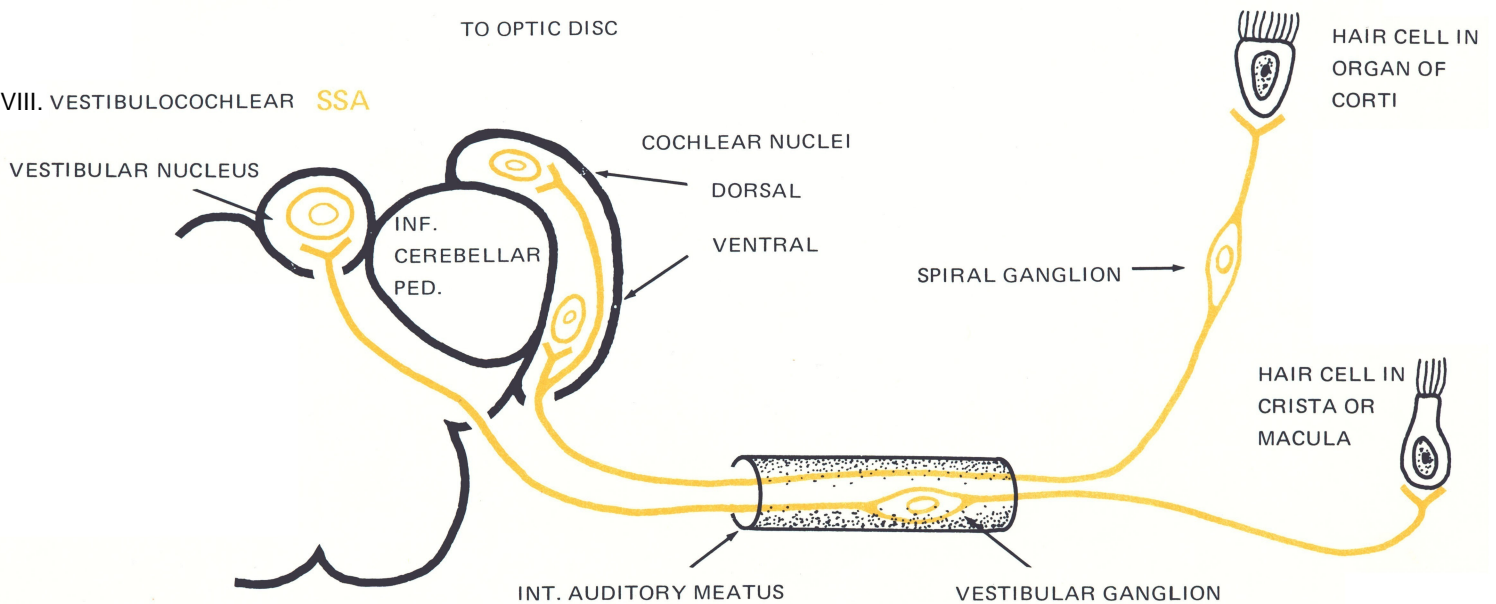
I. OLFACTORY SVA



II. OPTIC SSA

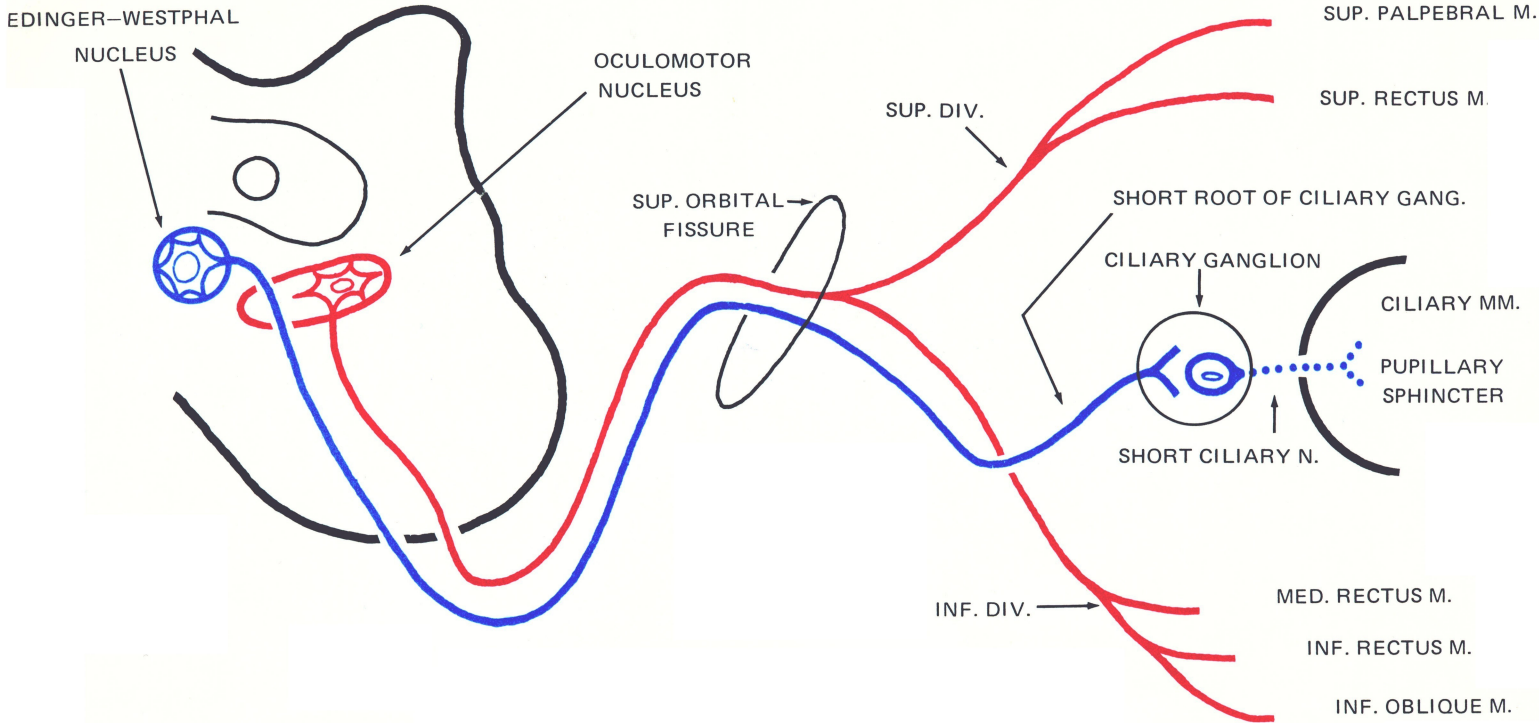


VIII. VESTIBULOCOCHLEAR SSA



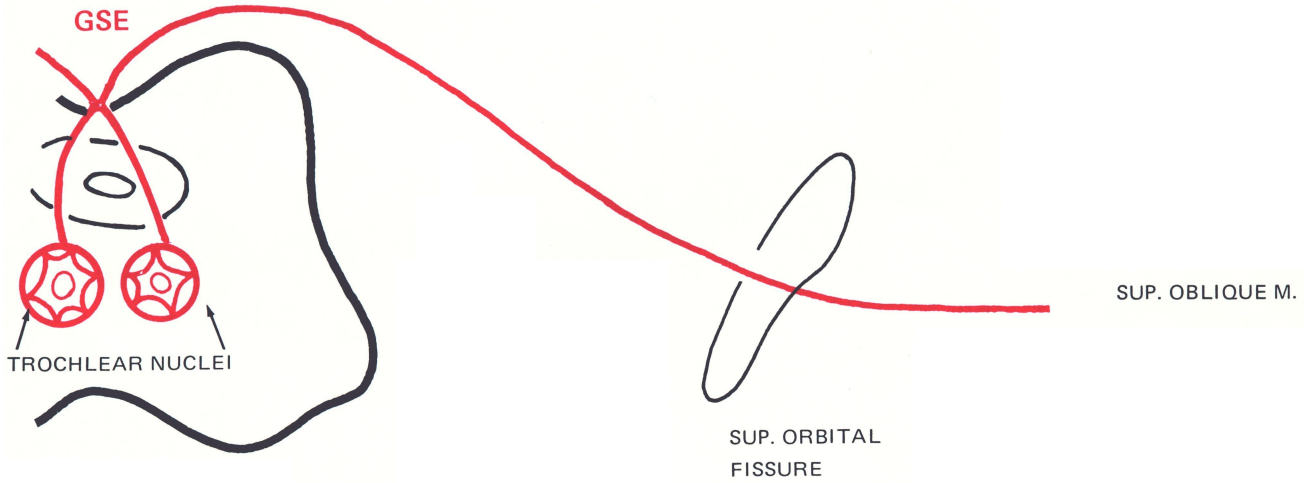
III OCULOMOTOR

GSE GVE



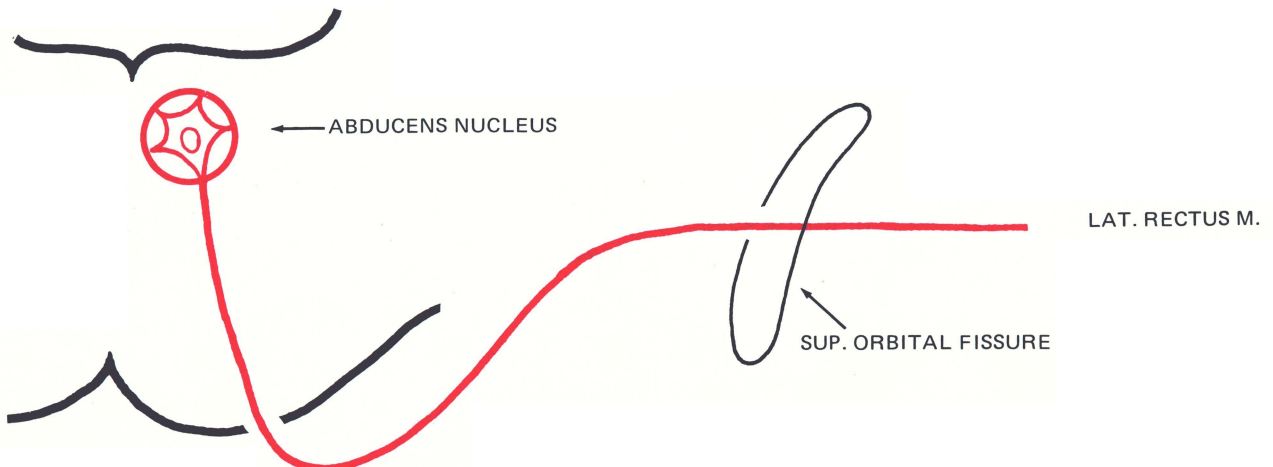
IV TROCHLEAR

GSE

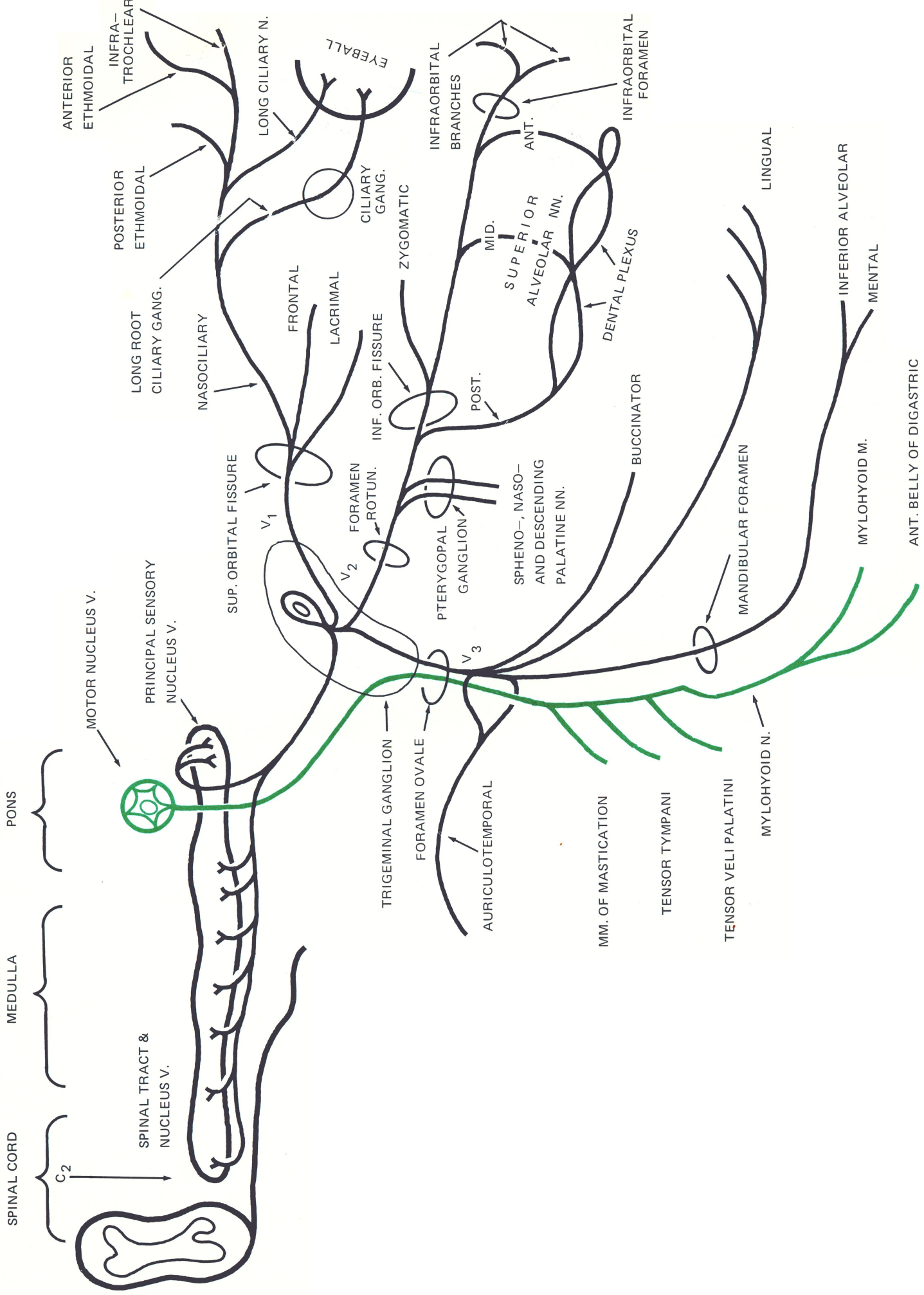


VI. ABDUCENS

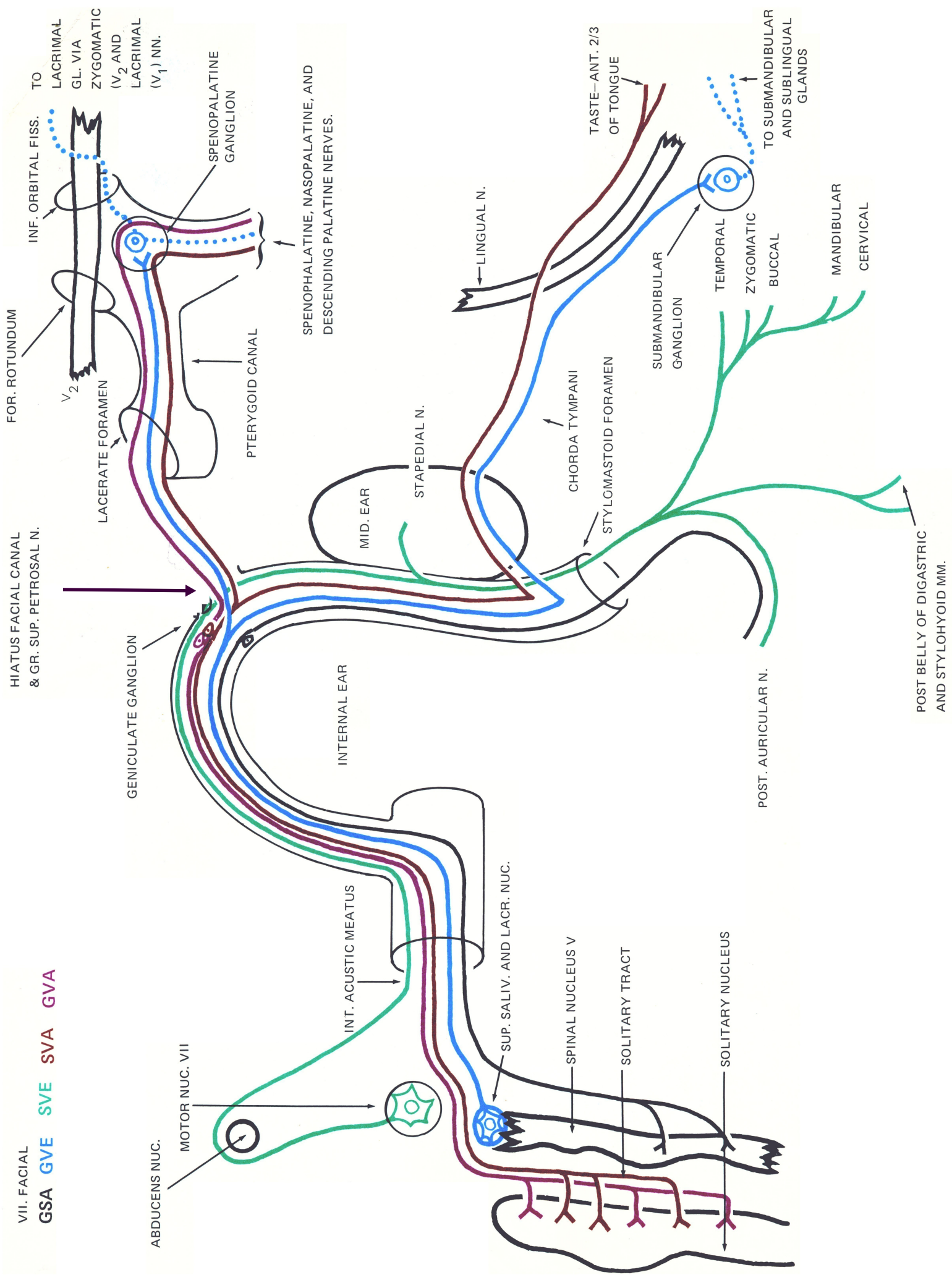
GSE



V. TRIGEMINAL
GSA SVE

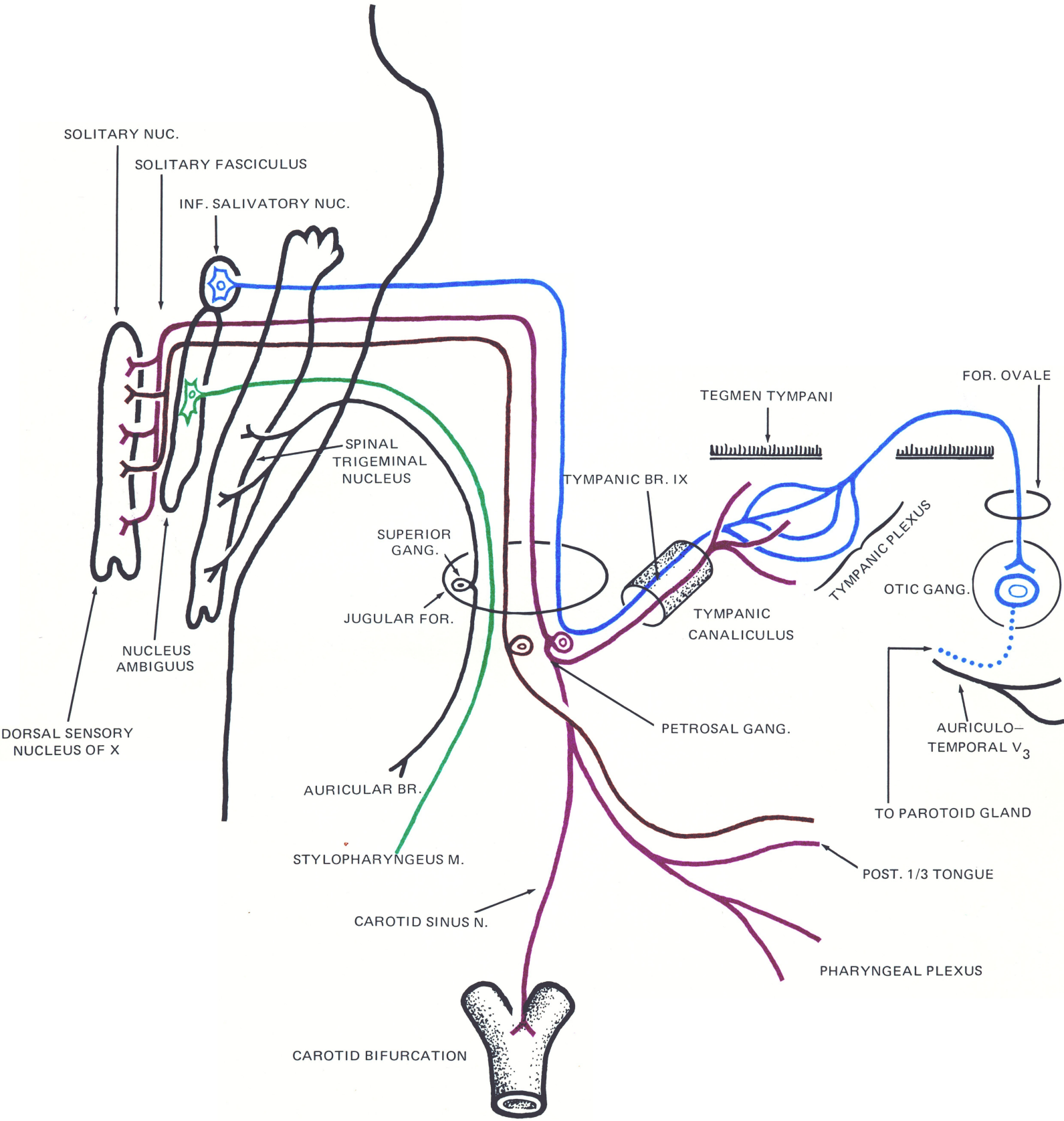


VII. FACIAL
GSA GVE SVE SVA GVA

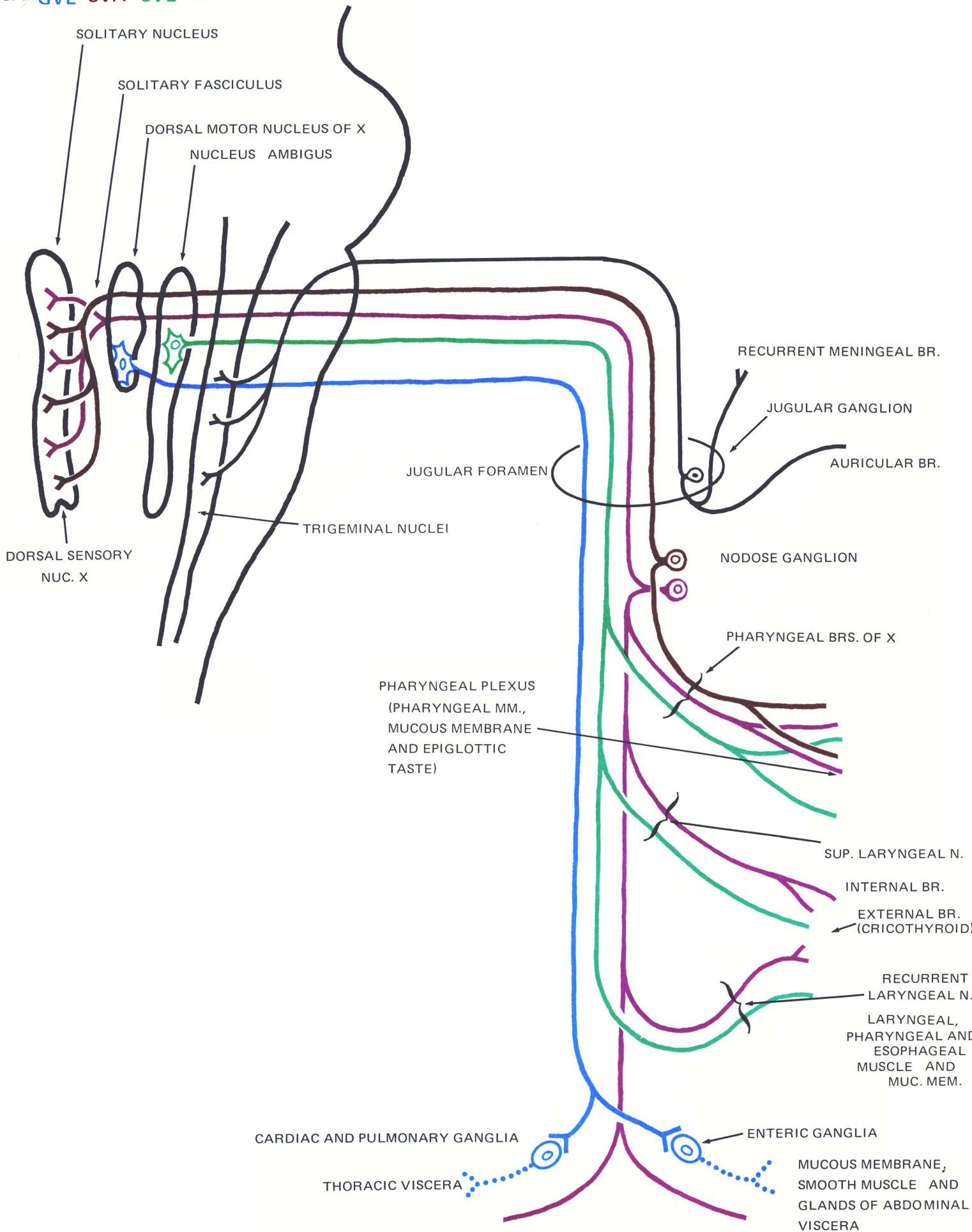


IX. GLOSSOPHARYNGEAL

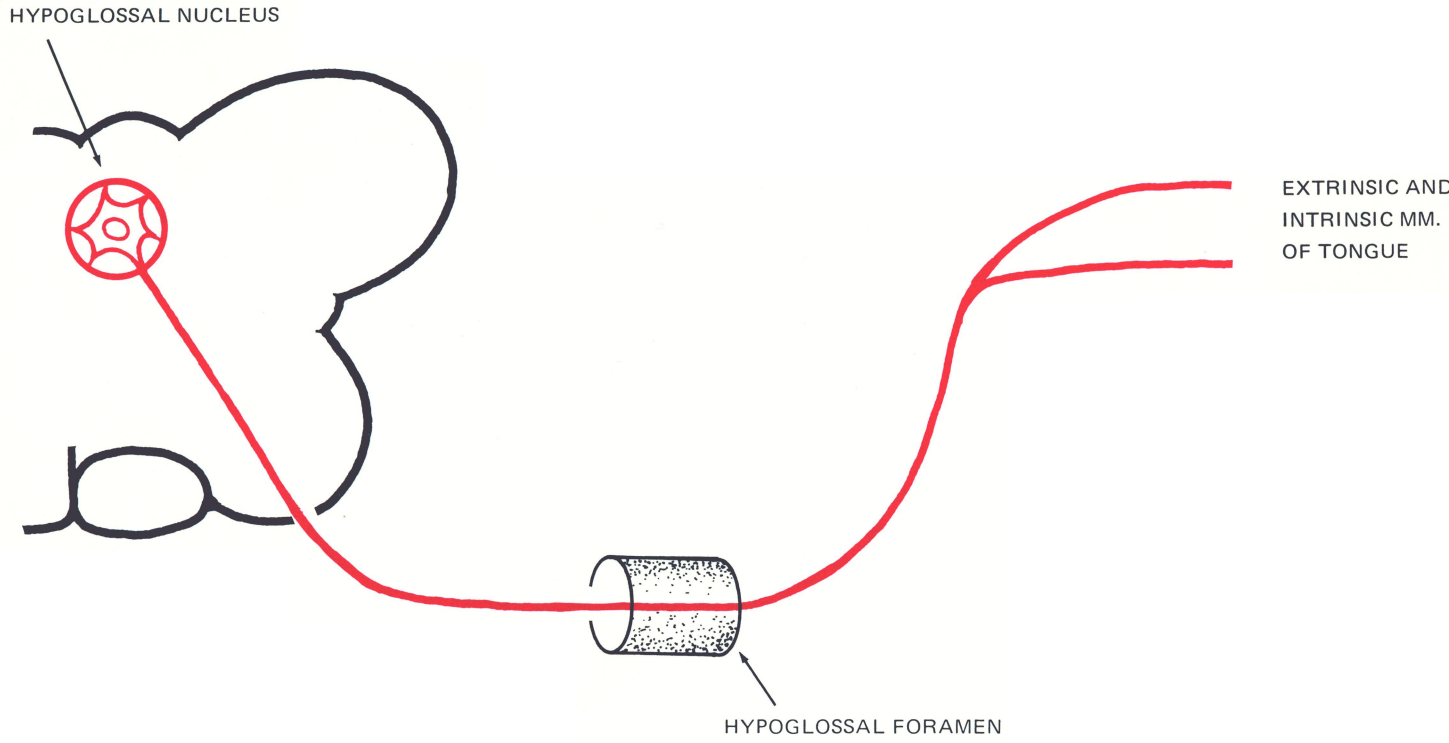
GSA GVA GVE SVA SVE



VAGUS
 GSA GVE SVA SVE GVA



XII. HYPOGLOSSAL GSE



XI. ACCESSORY SVE

